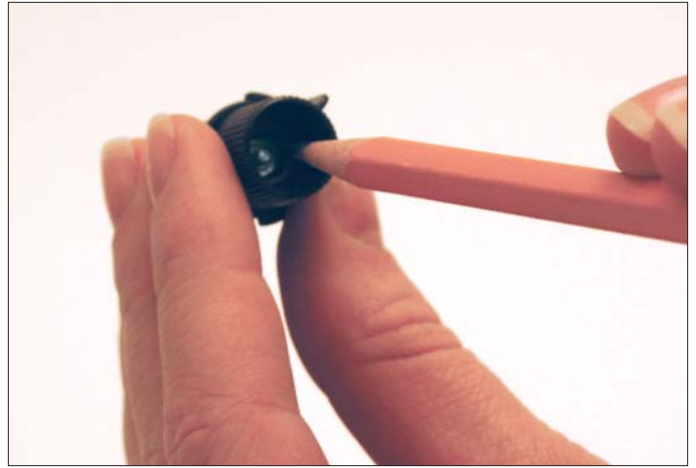


How to Replace a Silhouette Blade

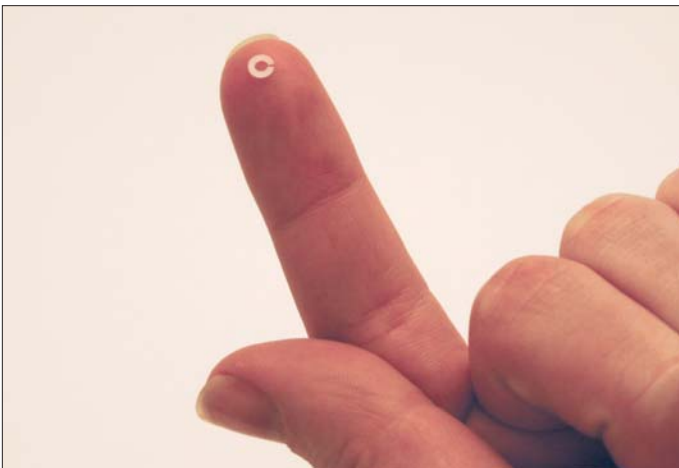
Warning: Blade is sharp! Please use caution when handling.



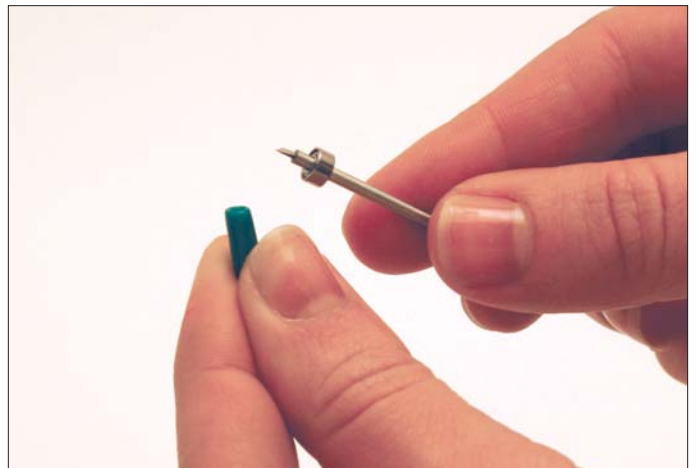
1 Remove the blade cap by twisting it off the top.



2 Using the tip of a pen, pencil or something similar, push out the old blade through the bottom of the blade holder.



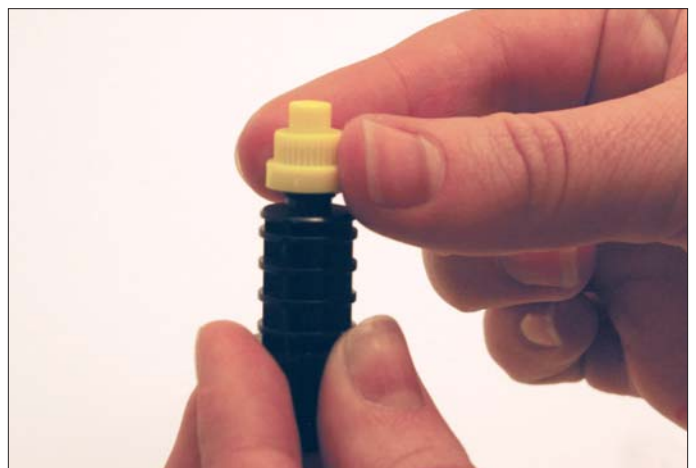
3 When the old blade is removed, a clear plastic washer will come out as well. This is not needed for the new blade.



4 Remove the replacement blade from its packaging and take off the green protective cap.



5 Push the new blade into the hole at the top of the blade holder.



6 Spin the blade cap back into place.